

## Test Report

No. 2101598/EC

Date : Jan 26 2010

Page 1 of 8

ARMOUR HONG KONG LTD.  
SUITE 14, 7/F., BLOCK A, HOI LUEN INDUSTRIAL CENTRE,  
55 HOI YUEN ROAD,  
KWUN TONG, KOWLOON  
HONG KONG

The following sample was submitted and identified on behalf of the client as :  
LSOH CABLE

SGS Job No. : 1323391  
Item No. : QE4010 / QX16/2  
Sample Receiving Date : JAN 14 2010  
Testing Period : JAN 14 - 26 2010

### **Test Requested:**

1. To determine the Smoke density of cables of IEC 61034-1:2005 Measurement of smoke density of cables burning under defined conditions –Part 1: Test apparatus and IEC 61034-2:2005 Measurement of smoke density of cables burning under defined conditions –Part 2: Test procedure and requirements.
2. To determine the vertical flame propagation of single cable of IEC 60332-1-2: 2004 Tests on electric and optical fibre cables under fire conditions – Part 1-2: Test for vertical flame propagation for a single insulated wire or cable – Procedure for 1 kW pre-mixed flame
3. To determine the gases evolved pH and conductivity of IEC 60754-2:1991(Amendment 1,1997) Test on gases evolved during combustion of electric cables – Part 2: Determination of degree of acidity of gases evolved during the combustion of materials taken from electric cables by measuring pH and conductivity

**Test Results:** --- See attached sheet ---

Signed for and on behalf of  
SGS Hong Kong Ltd



\_\_\_\_\_  
Lee Fu Wa, Leo  
Section Manager

**1. Test for smoke density of cables**

**I. Test Conducted**

This test is conducted as per IEC 61034-1:2005 Measurement of smoke density of cables burning under defined conditions –Part 1: Test apparatus and IEC 61034-2:2005 Measurement of smoke density of cables burning under defined conditions –Part 2: Test procedure and requirements.

**II. Sample details**

Materials / Color / Diameter	2 core cable / Pink / Ø5.8mm
------------------------------	------------------------------

**Conditioning**

Before testing, all test pieces was carefully straightened and then conditioned for at least 16 h at 23 °C ± 5 °C.

**III. Preparation of specimen**

<p><b>Length of specimen pieces:</b> (1.00±0.05)m  <b>Number of specimen:</b> N<sub>1</sub>= 8 pieces</p>
<p>*Formula:        D&gt;40mm,            N=1                          20mm&lt;D≤40mm,        N=2                          10mm&lt;D≤20mm,        N=3                          5mm&lt;D≤10mm,        N<sub>1</sub>=45/D                          1mm&lt;D≤5mm,        N<sub>2</sub>=45/3D</p> <p>D——overall diameter of cable.          N<sub>1</sub>——number of specimen.          N<sub>2</sub>——number of bundles which contain 7 test pieces twisted together with a lay between 20D and 30D and bound with two turns of approximately 0.5 mm diameter wire in the centre and at every 100mm each side from the centre.</p>
<p><b>Details of mounting test sample:</b>  <b>Circular cables:</b> Individual test piece or bundles of test pieces shall be bound together at the ends, and at 300mm from each end, at which place they shall be clamped to the support by means of wire binders.</p>

This document is issued by the Company subject to its General Conditions of Service printed overleaf, available on request or accessible at [www.sgs.com/terms\\_and\\_conditions.htm](http://www.sgs.com/terms_and_conditions.htm) and, for electronic format documents, subject to Terms and Conditions for Electronic Documents at [www.sgs.com/terms\\_e-document.htm](http://www.sgs.com/terms_e-document.htm). Attention is drawn to the limitation of liability, indemnification and jurisdiction issues defined therein. Any holder of this document is advised that information contained hereon reflects the Company's findings at the time of its intervention only and within the limits of Client's instructions, if any. The Company's sole responsibility is to its Client and this document does not exonerate parties to a transaction from exercising all their rights and obligations under the transaction documents. This document cannot be reproduced except in full, without prior written approval of the Company. Any unauthorized alteration, forgery or falsification of the content or appearance of this document is unlawful and offenders may be prosecuted to the fullest extent of the law.

Unless otherwise stated the results shown in this test report refer only to the sample(s) tested and such sample(s) are retained for 30 days only.

**IV. Test results**

The minimum light transmittance (%)	84
-------------------------------------	----

**Recommended performance requirement**

In the absence of any given requirement, it is recommended that a value of 60 % cable light transmittance is adopted as a minimum for any cable tested against this standard.

**Sub-conclusion**

Based on the test results, the test sample would meets above recommended performance requirements.

**Remark:** Evaluation of test results

- I. For cables up to and including 80 mm overall diameter, the recorded minimum light transmittance shall be taken as the cable light transmittance.
- II. For cables above 80 mm overall diameter, the recorded minimum light transmittance shall be normalized by multiplying by a factor of  $D/80$  (where  $D$  is the actual diameter in millimeters of the cable under test) and the resulting value shall be taken as the cable light transmittance.

This document is issued by the Company subject to its General Conditions of Service printed overleaf, available on request or accessible at [www.sgs.com/terms\\_and\\_conditions.htm](http://www.sgs.com/terms_and_conditions.htm) and, for electronic format documents, subject to Terms and Conditions for Electronic Documents at [www.sgs.com/terms\\_e-document.htm](http://www.sgs.com/terms_e-document.htm). Attention is drawn to the limitation of liability, indemnification and jurisdiction issues defined therein. Any holder of this document is advised that information contained hereon reflects the Company's findings at the time of its intervention only and within the limits of Client's instructions, if any. The Company's sole responsibility is to its Client and this document does not exonerate parties to a transaction from exercising all their rights and obligations under the transaction documents. This document cannot be reproduced except in full, without prior written approval of the Company. Any unauthorized alteration, forgery or falsification of the content or appearance of this document is unlawful and offenders may be prosecuted to the fullest extent of the law.

Unless otherwise stated the results shown in this test report refer only to the sample(s) tested and such sample(s) are retained for 30 days only.

**2. Test for vertical flame propagation for a single insulated wire or cable**

**I. Test conducted**

This test was performed in accordance with IEC 60332-1: 2004. Test for vertical flame propagation for a single insulated wire or cable.

**II. Sample details**

Color	Pink
Inter Wire Diameter	2.5mm
Overall Diameter	5.8mm

**Conditioning**

Before testing, all test pieces was conditioned at  $(23\pm5)^\circ\text{C}$  for not less than 16h at a relative humidity of  $(50\pm20)\%$ .

**III. Test results**

Flame Application:  $60\pm2\text{s}$

During the test duration, recorded:	
If the filter paper has ignited or not;	NO
If the filter paper has ignited, the time from ignition of the filter paper to cessation of the burning;	NO
If the distance between the lower edge of the top support and the onset of charring is less than 50mm or not;	NO
If charring extends downwards to a point greater than 540 mm from the lower edge of the top support.	NO

This document is issued by the Company subject to its General Conditions of Service printed overleaf, available on request or accessible at [www.sgs.com/terms\\_and\\_conditions.htm](http://www.sgs.com/terms_and_conditions.htm) and, for electronic format documents, subject to Terms and Conditions for Electronic Documents at [www.sgs.com/terms\\_e-document.htm](http://www.sgs.com/terms_e-document.htm). Attention is drawn to the limitation of liability, indemnification and jurisdiction issues defined therein. Any holder of this document is advised that information contained hereon reflects the Company's findings at the time of its intervention only and within the limits of Client's instructions, if any. The Company's sole responsibility is to its Client and this document does not exonerate parties to a transaction from exercising all their rights and obligations under the transaction documents. This document cannot be reproduced except in full, without prior written approval of the Company. Any unauthorized alteration, forgery or falsification of the content or appearance of this document is unlawful and offenders may be prosecuted to the fullest extent of the law.

Unless otherwise stated the results shown in this test report refer only to the sample(s) tested and such sample(s) are retained for 30 days only.

**Recommended performance requirements**

The performance requirements for a particular type or class of insulated conductor or cable should preferably be given in the individual cable standard. In the absence of any given requirement it is recommended that those given below should be taken as a minimum acceptable level.

- 1) The single insulated conductor or cable shall pass the test if the distance between the lower edge of the top support and the onset of charring is greater than 50 mm.
- 2) In addition, a failure shall be recorded if charring extends downwards to a point greater than 540 mm from the lower edge of the top support.

If a failure is recorded, two more tests shall be carried out. If both tests result in passes, the single insulated conductor or cable shall be deemed to have passed the test.

**Sub-conclusion**

Based on the test results, the test sample would meets above recommended performance requirements.

**3. Test for pH and conductivity**

**I. Test Conducted**

This test is conducted as per IEC 60754-2:1991(Amendment 1,1997) Test on gases evolved during combustion of electric cables – Part 2: Determination of degree of acidity of gases evolved during the combustion of materials taken from electric cables by measuring pH and conductivity

**II. Sample details**

Name / Diameter	Cable / Ø5.8mm
Non-metal materials	Outer Layer of Cable - Pink Plastic w/Black Printing
	Wire insulator - Red Plastic w/Black Plastic

**Conditioning**

Before testing, all test pieces was conditioned at (23±2) °C for not less than 16h at a relative humidity of (50±5) %.

This document is issued by the Company subject to its General Conditions of Service printed overleaf, available on request or accessible at [www.sgs.com/terms\\_and\\_conditions.htm](http://www.sgs.com/terms_and_conditions.htm) and, for electronic format documents, subject to Terms and Conditions for Electronic Documents at [www.sgs.com/terms\\_e-document.htm](http://www.sgs.com/terms_e-document.htm). Attention is drawn to the limitation of liability, indemnification and jurisdiction issues defined therein. Any holder of this document is advised that information contained hereon reflects the Company's findings at the time of its intervention only and within the limits of Client's instructions, if any. The Company's sole responsibility is to its Client and this document does not exonerate parties to a transaction from exercising all their rights and obligations under the transaction documents. This document cannot be reproduced except in full, without prior written approval of the Company. Any unauthorized alteration, forgery or falsification of the content or appearance of this document is unlawful and offenders may be prosecuted to the fullest extent of the law.

Unless otherwise stated the results shown in this test report refer only to the sample(s) tested and such sample(s) are retained for 30 days only.

**III. Test Results**

a) Outer layer of cable

S/N	Specimen mass(m), g	PH	PH		Conductivity, uS/mm	Conductivity	
			$\bar{\sigma}$	Cv		$\bar{\sigma}$	Cv
1	1.1000	5.20	0.02	0.39%	7.40	0.02	0.23%
2	1.1100	5.23			7.44		
3	1.0900	5.25			7.43		
Average		5.23			7.42		

$\bar{\sigma}$ , means Standard deviation of PH or Conductivity

Cv, means Coefficient of variation of PH or Conductivity

b) Wire insulator of cable

S/N	Specimen mass(m), g	PH	PH		Conductivity, uS/mm	Conductivity	
			$\bar{\sigma}$	Cv		$\bar{\sigma}$	Cv
1	1.0050	5.26	0.01	0.18%	7.50	0.02	0.33%
2	1.0060	5.24			7.56		
3	1.0062	5.26			7.52		
Average		5.25			7.53		

This document is issued by the Company subject to its General Conditions of Service printed overleaf, available on request or accessible at [www.sgs.com/terms\\_and\\_conditions.htm](http://www.sgs.com/terms_and_conditions.htm) and, for electronic format documents, subject to Terms and Conditions for Electronic Documents at [www.sgs.com/terms\\_e-document.htm](http://www.sgs.com/terms_e-document.htm). Attention is drawn to the limitation of liability, indemnification and jurisdiction issues defined therein. Any holder of this document is advised that information contained hereon reflects the Company's findings at the time of its intervention only and within the limits of Client's instructions, if any. The Company's sole responsibility is to its Client and this document does not exonerate parties to a transaction from exercising all their rights and obligations under the transaction documents. This document cannot be reproduced except in full, without prior written approval of the Company. Any unauthorized alteration, forgery or falsification of the content or appearance of this document is unlawful and offenders may be prosecuted to the fullest extent of the law.

Unless otherwise stated the results shown in this test report refer only to the sample(s) tested and such sample(s) are retained for 30 days only.

C) Weighted value calculation

Non-metal materials	PH	PH'	C	C'
Outer layer	5.23	5.24	7.42	7.45
Wire insulator	5.25		7.53	

Equation, weighted value of PH,

$$PH' = \lg \frac{\sum Wi}{\sum (Wi/10^x)} ; \text{ among them,}$$

$x$  is PH value of each non-metal materials

Equation, Conductivity:

$$C' = \frac{\sum CiWi}{\sum Wi} ; \text{ among them,}$$

$Ci$  is conductivity of each non-metal materials;

$Wi$  is weight per unit length of cable, approximately measured upon balance method;

**Recommended values**

1. The weighted PH value should not be less than 4.3, when related to 1 litre of water;
2. The weighted value of conductivity should not exceed 10uS/mm

**Sub-conclusion**

Based on the test results, the test sample would meets above recommended performance requirements.

**STATEMENT:**

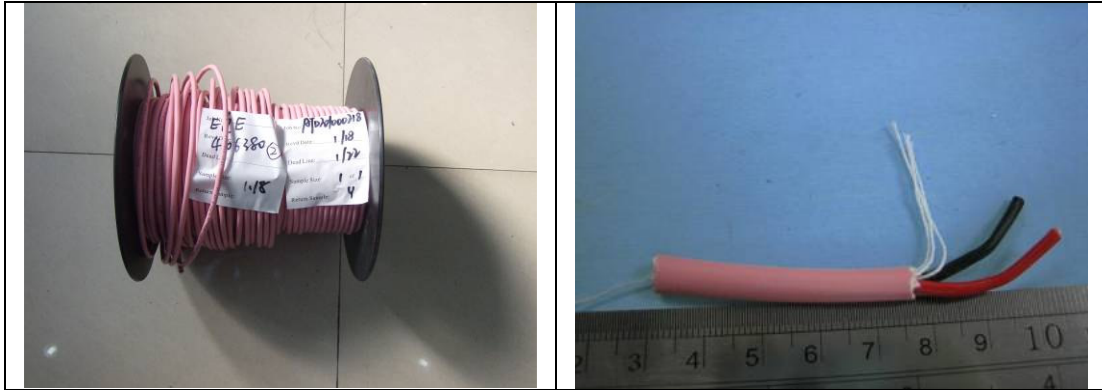
The test results relate to the behaviour of the test specimens of a product under the particular conditions of the test; they are not intended to be the sole criterion for assessing the potential fire hazard of the product in use.

This document is issued by the Company subject to its General Conditions of Service printed overleaf, available on request or accessible at [www.sgs.com/terms\\_and\\_conditions.htm](http://www.sgs.com/terms_and_conditions.htm) and, for electronic format documents, subject to Terms and Conditions for Electronic Documents at [www.sgs.com/terms\\_e-document.htm](http://www.sgs.com/terms_e-document.htm). Attention is drawn to the limitation of liability, indemnification and jurisdiction issues defined therein. Any holder of this document is advised that information contained hereon reflects the Company's findings at the time of its intervention only and within the limits of Client's instructions, if any. The Company's sole responsibility is to its Client and this document does not exonerate parties to a transaction from exercising all their rights and obligations under the transaction documents. This document cannot be reproduced except in full, without prior written approval of the Company. Any unauthorized alteration, forgery or falsification of the content or appearance of this document is unlawful and offenders may be prosecuted to the fullest extent of the law.

Unless otherwise stated the results shown in this test report refer only to the sample(s) tested and such sample(s) are retained for 30 days only.

**Remark: Test results were obtained by SGS affiliated laboratory.**

**Photo Appendix:**



\*\*\*End of Report\*\*\*

This document is issued by the Company subject to its General Conditions of Service printed overleaf, available on request or accessible at [www.sgs.com/terms\\_and\\_conditions.htm](http://www.sgs.com/terms_and_conditions.htm) and, for electronic format documents, subject to Terms and Conditions for Electronic Documents at [www.sgs.com/terms\\_e-document.htm](http://www.sgs.com/terms_e-document.htm). Attention is drawn to the limitation of liability, indemnification and jurisdiction issues defined therein. Any holder of this document is advised that information contained hereon reflects the Company's findings at the time of its intervention only and within the limits of Client's instructions, if any. The Company's sole responsibility is to its Client and this document does not exonerate parties to a transaction from exercising all their rights and obligations under the transaction documents. This document cannot be reproduced except in full, without prior written approval of the Company. Any unauthorized alteration, forgery or falsification of the content or appearance of this document is unlawful and offenders may be prosecuted to the fullest extent of the law.

Unless otherwise stated the results shown in this test report refer only to the sample(s) tested and such sample(s) are retained for 30 days only.